



2009 ADVANCE PRODUCT PREVIEW

FORTHCOMING ELTE PRODUCTS

AF38 4,5/2
V 220
HZ 500/540
RPM 32000
KW 0,10
WITHOUT VENTILATION



AF38 4,5/2
V 220
HZ 500/540
RPM 32000
KW 0,10
WITHOUT VENTILATION



AF46 4,5/2
V 220
HZ 300/340
RPM 20000
KW 0,14
WITHOUT VENTILATION



Compact electric spindle for light engraving and dental mechanics.

AF80 7/2 HSK E-25
V 350
HZ 400/670
RPM 40000
KW 2,2
LIQUID COOLED



AF90 7/2 HSK E-25
V 350
HZ 400/670
RPM 40000
KW 3,0
LIQUID COOLED



Automatic tool change electric spindles, very compact design, max speed 50000 RPM.

AF152 12/4 and 16/4 ISO 40
V 350
HZ 100/333
RPM 10000
KW 7,5 and 10
LIQUID COOLED



AF152 12/4 and 16/4 ISO 40
V 350
HZ 150/333
RPM 10000
KW 9 and 12
LIQUID COOLED



AF152 12/4 and 16/4 ISO 40
V 350
HZ 200/400
RPM 12000
KW 12 and 16
LIQUID COOLED

Automatic tool change electric spindle ISO40 interfaced for heavy duty work in marble, glass and light metals. Through shaft coolant path and drive keys. HSK 63F – HSK 80F on request.

ELECTRIC SPINDLE WITH INTEGRAL INVERTER

After having manufactured the electric spindle with single phase inverter the maximum output power of our spindles with integral inverter has been increased from 1,5 KW to 3,3 KW due to our new range of 3 phase, V 230 and V 400 inverters.



WE NOW OFFER A NEW SERIES OF INVERTER

Elte can now offer a new Italian brand of inverters with the right characteristics to drive their electric spindles. We can offer the single-phase or the three-phase version, V 110-240 and V 200-480 with a power range from 0,55 KW to more than KW 37.



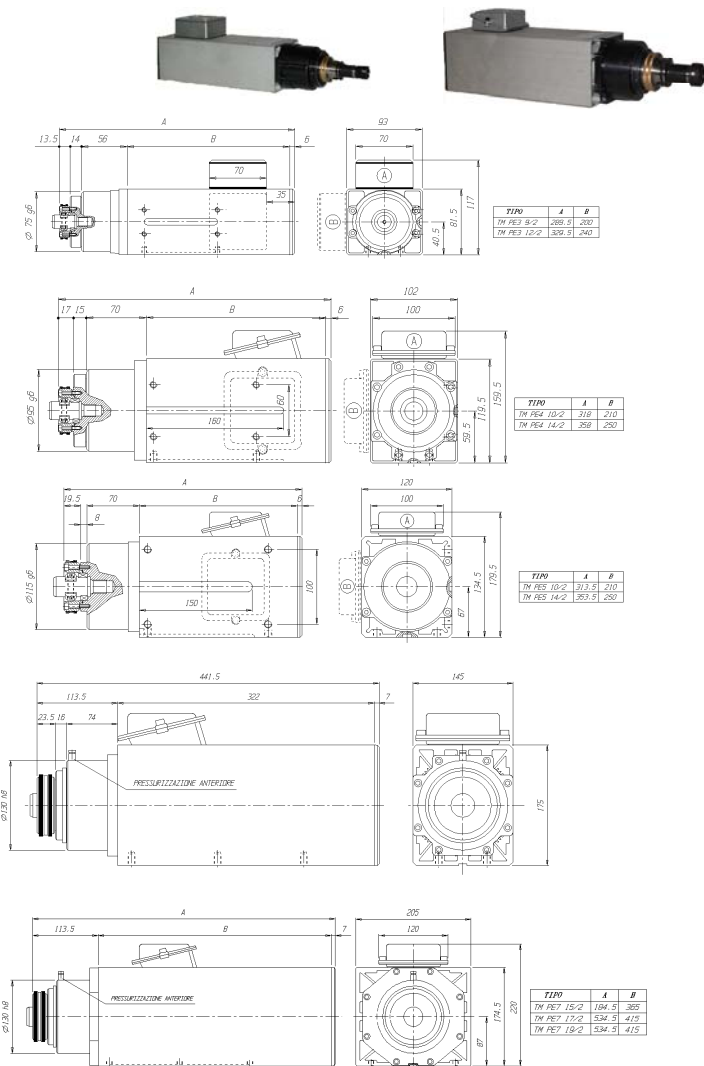
This is to introduce the new products for 2009, do not hesitate to contact our offices for further details.

We completed herewith our series of TMPE electric spindles by adding the TMPE7 series with ER40 interface and ER50 available on request.

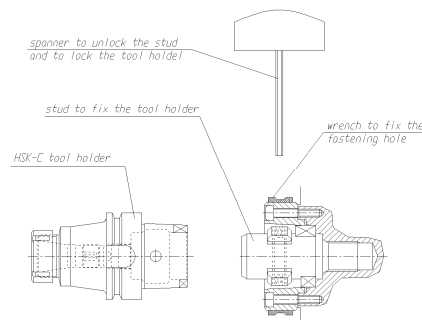


TYPE	VOLT	HZ	RPM	HP	KW
TM PE7 15/2	220/380	50	3000	7,60	5,60
TM PE7 15/2	220/380	100	6000	11,00	8,20
TM PE7 15/2	220/380	200	12000	16,30	12,00
TM PE7 17/2	220/380	50	3000	10,00	7,50
TM PE7 17/2	220/380	100	6000	14,20	10,50
TM PE7 17/2	220/380	200	12000	20,50	15,00
TM PE7 19/2	220/380	50	3000	11,20	8,20
TM PE7 19/2	220/380	100	6000	16,30	12,00
TM PE7 19/2	220/380	200	12000	24,50	15,00

We are manufacturing a new series of motorized spindles TMPE3 – TMPE4 – TMPE5 TMPE6 – TMPE 7 with manual HSK tool interface to offer an alternative to the ISO tapers. This will allow to faster tool changes and be particularly suitable for larger series.



TYPE	VOLT	HZ	GIRI	HP	KW	
TMPE3 9/2	220/380	50	3000	0,27	0,20	HSK32A
TMPE3 9/2	220/380	100	6000	0,60	0,45	HSK32A
TMPE3 9/2	220/380	200	12000	1,00	0,75	HSK32A
TMPE3 9/2	220/380	300	18000	1,36	1,00	HSK32A
TMPE3 9/2	220/380	400	24000	1,36	1,00	HSK32A
TMPE3 12/2	220/380	50	3000	0,40	0,30	HSK32A
TMPE3 12/2	220/380	100	6000	1,00	0,75	HSK32A
TMPE3 12/2	220/380	200	12000	2,00	1,50	HSK32A
TMPE3 12/2	220/380	300	18000	2,70	2,00	HSK32A
TMPE3 12/2	220/380	400	24000	3,00	2,20	HSK32A
TMPE4 10/2	220/380	50	3000	0,88	0,65	HSK40A
TMPE4 10/2	220/380	100	6000	1,50	1,10	HSK40A
TMPE4 10/2	220/380	200	12000	3,00	2,20	HSK40A
TMPE4 10/2	220/380	300	18000	4,40	3,30	HSK40A
TMPE4 14/2	220/380	50	3000	1,50	1,10	HSK40A
TMPE4 14/2	220/380	100	6000	3,00	2,20	HSK40A
TMPE4 14/2	220/380	200	12000	5,00	3,70	HSK40A
TMPE4 14/2	220/380	300	18000	7,50	5,60	HSK40A
TMPE5 10/2	220/380	50	3000	1,70	1,25	HSK50A
TMPE5 10/2	220/380	100	6000	2,50	1,90	HSK50A
TMPE5 10/2	220/380	200	12000	4,00	3,00	HSK50A
TMPE5 10/2	220/380	250	15000	5,00	3,60	HSK50A
TMPE5 14/2	220/380	50	3000	4,00	3,00	HSK50A
TMPE5 14/2	220/380	100	6000	5,40	4,00	HSK50A
TMPE5 14/2	220/380	150	9000	5,40	4,00	HSK50A
TMPE5 14/2	220/380	200	12000	6,00	4,50	HSK50A
TMPE5 14/2	220/380	250	15000	8,00	6,00	HSK50A
TM PE6 15/2	220/380	50	3000	4,50	3,40	HSK63A
TM PE6 15/2	220/380	100	6000	7,50	5,60	HSK63A
TM PE6 15/2	220/380	200	12000	11,40	8,50	HSK63A
TM PE7 15/2	220/380	50	3000	7,60	5,60	HSK63A
TM PE7 15/2	220/380	100	6000	11,00	8,20	HSK63A
TM PE7 15/2	220/380	200	12000	16,30	12,00	HSK63A
TM PE7 17/2	220/380	50	3000	10,00	7,50	HSK63A
TM PE7 17/2	220/380	100	6000	14,20	10,50	HSK63A
TM PE7 17/2	220/380	200	12000	20,50	15,00	HSK63A
TM PE7 19/2	220/380	50	3000	11,20	8,20	HSK63A
TM PE7 19/2	220/380	100	6000	16,30	12,00	HSK63A
TM PE7 19/2	220/380	200	12000	24,50	18,00	HSK63A

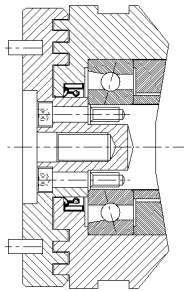


ELECTRIC SPINDLES FOR GLASS PROCESSING

MANUAL TOOL CHANGE SERIES



MECHANICAL SEAL BY OIL RETAINER TO PROTECT FROM REFRIGERATING LIQUIDS



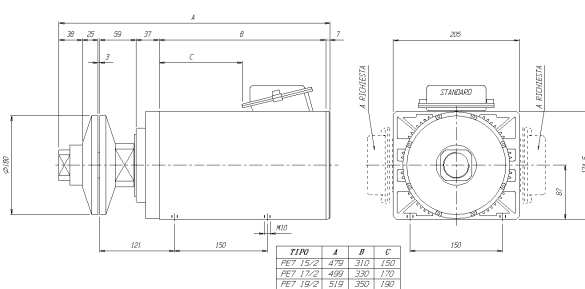
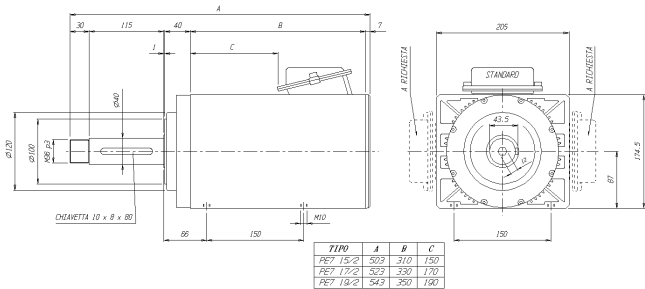
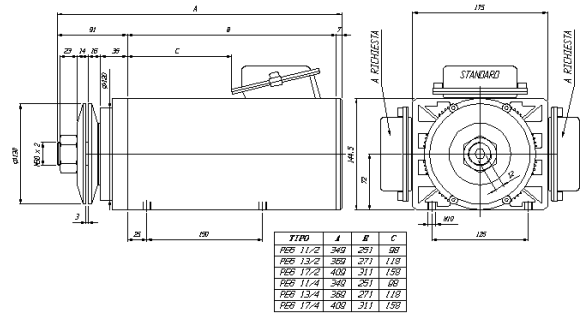
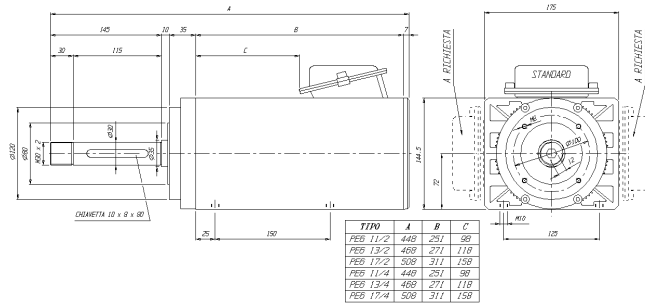
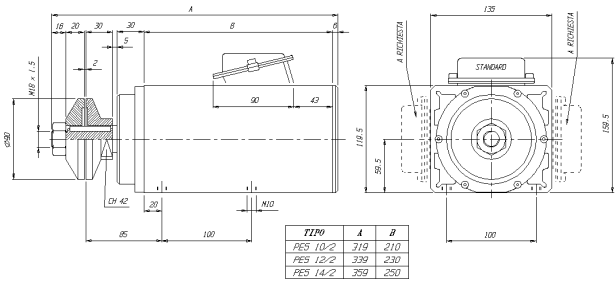
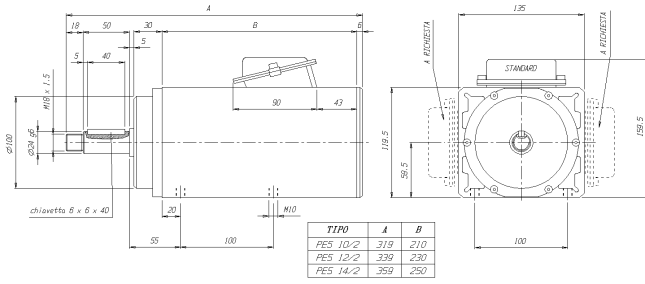
TMPE5 10/2 V 230/400 HZ 50 RPM 3000
TMPE5 14/2 V 230/400 HZ 50 RPM 3000
TMPE5 14/2-4 V 400 HZ 50 RPM 3000/1500
TMPE5 14/4 V230/400 HZ 50 RPM 1500
TMPE5 14/2 V 220/380 HZ 150 RPM 9000

AUTOMATIC TOOL CHANGE SERIES



AF110 10/2 cu pl HZ 50/200 RPM 3000/12000
AF110 14/2 cu pl HZ 50/200 RPM 3000/12000
AF110 14/4 cu pl HZ 100/400 RPM 3000/12000
AF152 12/4 cu pl HZ 100/400 RPM 3000/12000
AF152 16/4 cu pl HZ 100/400 RPM 3000/12000

SERIES FOR CIRCULAR SAW



TIPO TYPE TYP	POTENZA POWER LEISTUNG		POLI POLE S	TENSIONE VOLTAGE LEISTUNG	FREQ. FREQ. HZ	GIRI RPM UPM
	KW	HP				
PE5 10/2	1,0	1,3	2	220/380	50	3000
PE5 12/2	1,5	2,0	2	220/380	50	3000
PE5 14/2	2,2	3,0	2	220/380	50	3000
PE5 10/4	0,75	1,0	4	220/380	50	1500
PE5 12/4	1,1	1,5	4	220/380	50	1500
PE5 14/4	1,5	2,0	4	220/380	50	1500
PE5 10/2	2,0	2,7	2	220/380	100	6000
PE5 12/2	3,0	4,0	2	220/380	100	6000
PE5 14/2	4,0	5,5	2	220/380	100	6000
PE5 10/4	1,5	2,0	4	220/380	100	3000
PE5 12/4	2,2	3,0	4	220/380	100	3000
PE5 14/4	3,0	4,0	4	220/380	100	3000

TIPO TYPE TYP	POTENZA POWER LEISTUNG		POLI POLE S	TENSIONE VOLTAGE LEISTUNG	FREQ. FREQ. HZ	GIRI RPM UPM
	KW	HP				
PE6 11/2	2,3	3,2	2	220/380	50	3000
PE6 13/2	3,0	4,0	2	220/380	50	3000
PE6 17/2	4,0	5,5	2	220/380	50	3000
PE6 11/4	1,5	2,0	4	220/380	50	1500
PE6 13/4	2,2	3,0	4	220/380	50	1500
PE6 17/4	3,0	4,0	4	220/380	50	1500
PE6 11/2	2,3	3,2	2	220/380	100	6000
PE6 11/2	3,0	4,0	2	220/380	100	6000
PE6 11/2	4,0	5,5	2	220/380	100	6000
PE6 13/2	5,5	7,5	2	220/380	100	6000

TIPO TYPE TYP	POTENZA POWER LEISTUNG		POLI POLE S	TENSIONE VOLTAGE LEISTUNG	FREQ. FREQ. HZ	GIRI RPM UPM
	KW	HP				
PE7 15/2	6,0	8,5	2	220/380	50	3000
PE7 17/2	7,5	10,0	2	220/380	50	3000
PE7 19/2	8,5	11,5	2	220/380	50	3000
PE7 19/2 RR	10,0	13,5	2	220/380	50	3000
PE7 15/2	8,5	11,5	2	220/380	100	6000
PE7 17/2	10,5	14,0	2	220/380	100	6000
PE7 19/2	12,0	16,5	2	220/380	100	6000
PE7 19/2 RR	14,5	19,5	2	220/380	100	6000
PE7 15/4	4,0	5,5	4	220/380	50	1500
PE7 17/4	4,5	6,0	4	220/380	50	1500
PE7 19/4	5,0	7,0	4	220/380	50	1500
PE7 15/4	6,5	9,0	4	220/380	100	3000
PE7 17/4	7,5	10,0	4	220/380	100	3000
PE7 19/4	8,5	11,5	4	220/380	100	3000